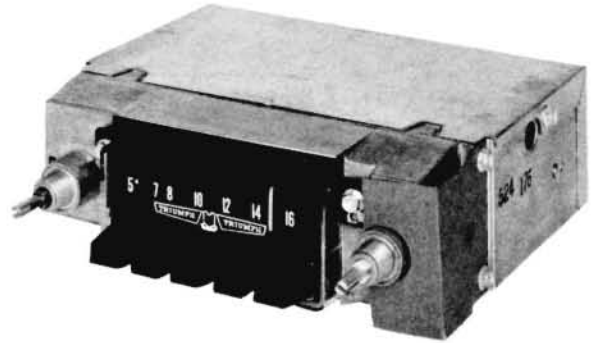




# PHOTOFACT<sup>®</sup> with

# CIRCUITRACE<sup>®</sup>

**TRADE NAME :** Triumph Model 5SMTR (V350)  
**SUPPLIER :** For Current Address, See Master Index.  
**TYPE SET :** 6 Transistor AM Receiver  
**POWER SUPPLY :** 12 Volt Storage Battery  
**RATING :** .880 Amp. @ 12.6 Volts DC  
  
**TUNING RANGE :** BROADCAST 540-1615KC



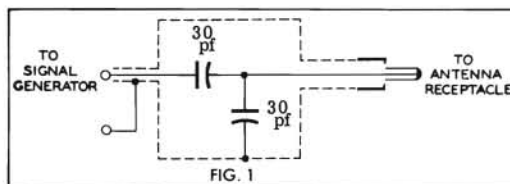
## ALIGNMENT INSTRUCTIONS

Check for specified source voltage.  
 Use only enough generator output to provide a usable indication.  
 Suggested Alignment Tools:  
 A1 thru A4. GENERAL CEMENT: 9296, 9297, 9300  
 WALSCO: 2510, 2546, 2547  
 A5, A6, A7. GENERAL CEMENT: 8290, 8868, 9087  
 WALSCO: 2525, 2528, 2587

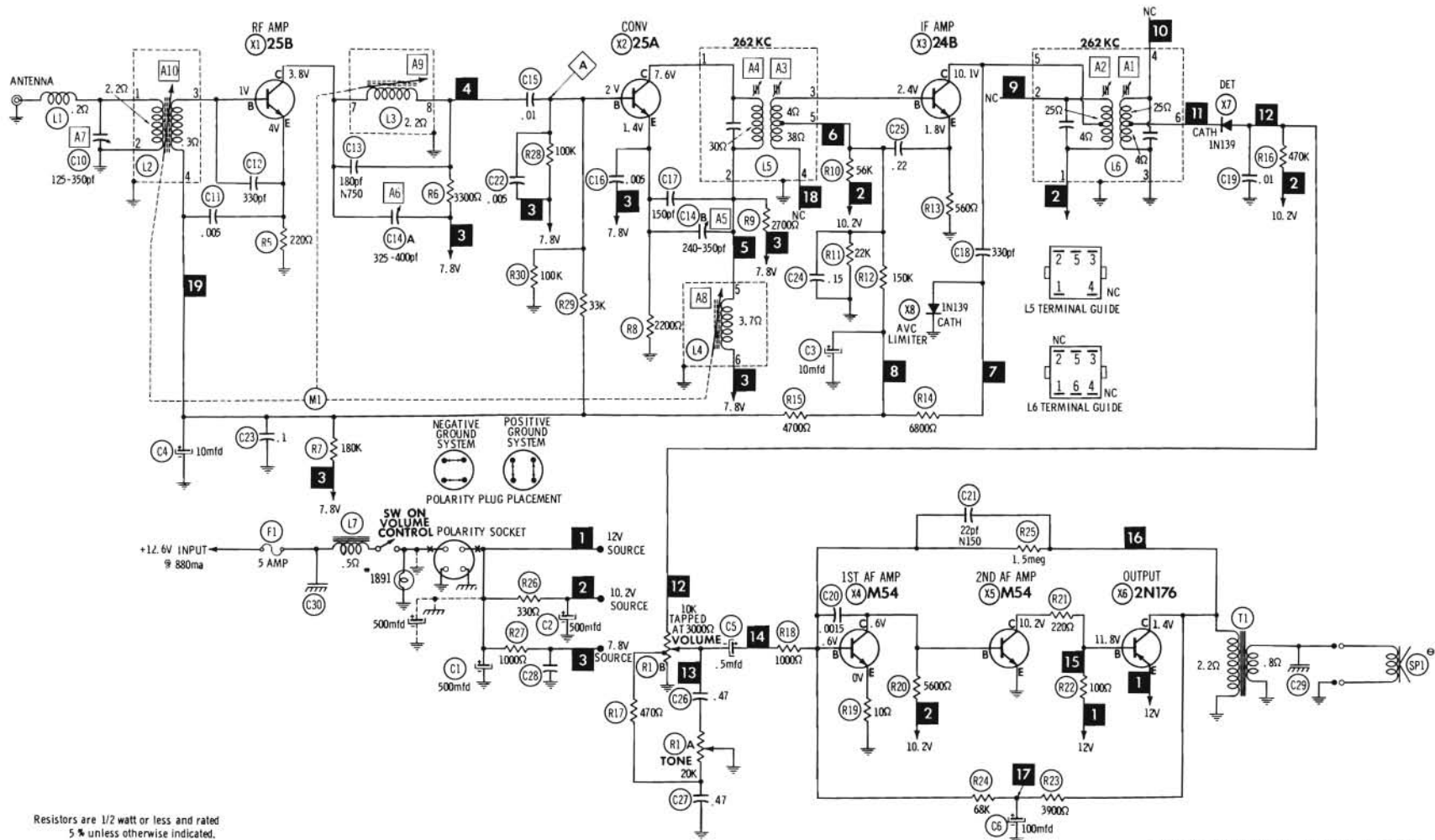
	SIGNAL GENERATOR COUPLING	SIGNAL GENERATOR FREQUENCY	RADIO DIAL SETTING	INDICATOR	ADJUST	REMARKS
1.	High side thru .1mfd to point $\Delta$ , low side to ground.	262KC (400v Mod.)	High Freq. End Stop.	Output Meter across voice coil.	A1, A2, A3, A4	Adjust for maximum.
2.	Thru dummy (Fig. 1) to antenna receptacle.	1615KC	"	"	A5, A6, A7	"
Step 3 is not necessary unless tuner has been tampered with or associated components have been replaced. IF necessary, back tuning cores (A8, A9, A10) out of coils but not out of forms. Repeat step 2.						
3.	Thru dummy (Fig. 1) to antenna receptacle.	1000KC	Tune to Signal.	Output Meter across voice coil.	A8, A9, A10	Adjust for maximum. Repeat steps 2 & 3 until no further improvement is noted.
With radio installed in car and antenna fully extended, tune in a weak station near 1400KC and adjust A7 for maximum output.						

**PUSH-BUTTON ADJUSTMENT**

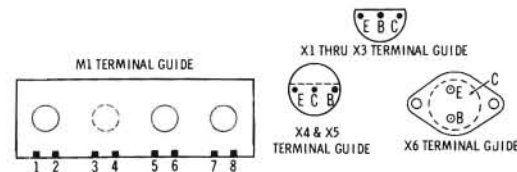
1. Pull button out.
2. Tune manually to desired station.
3. Press button in firmly.
4. Repeat for remaining buttons.

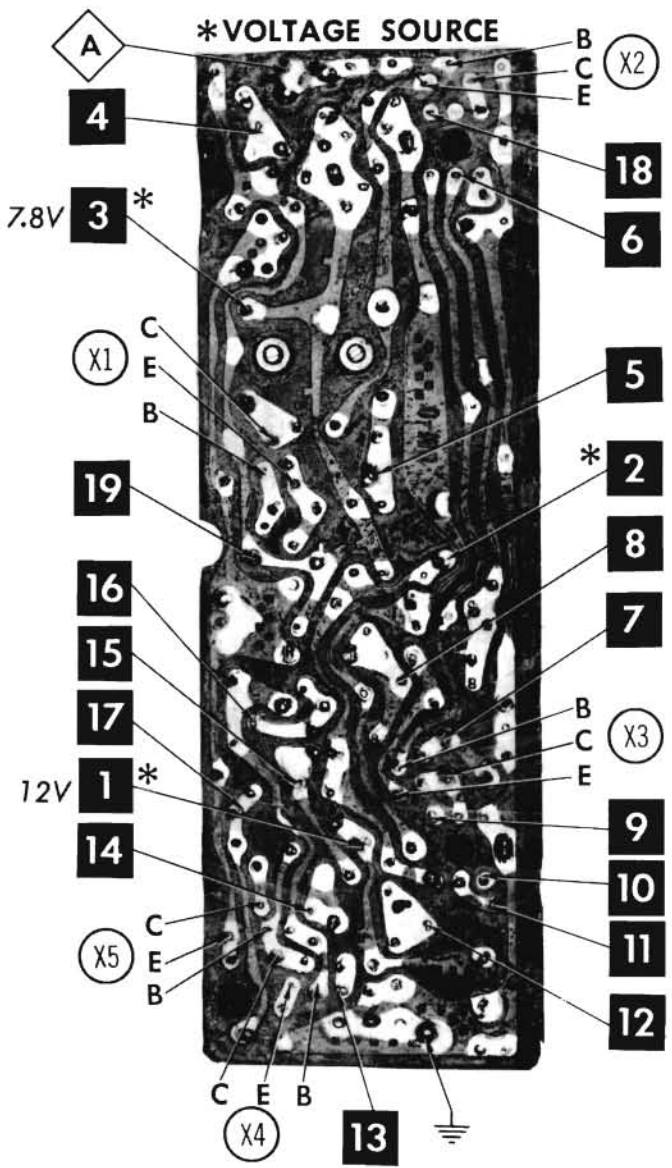
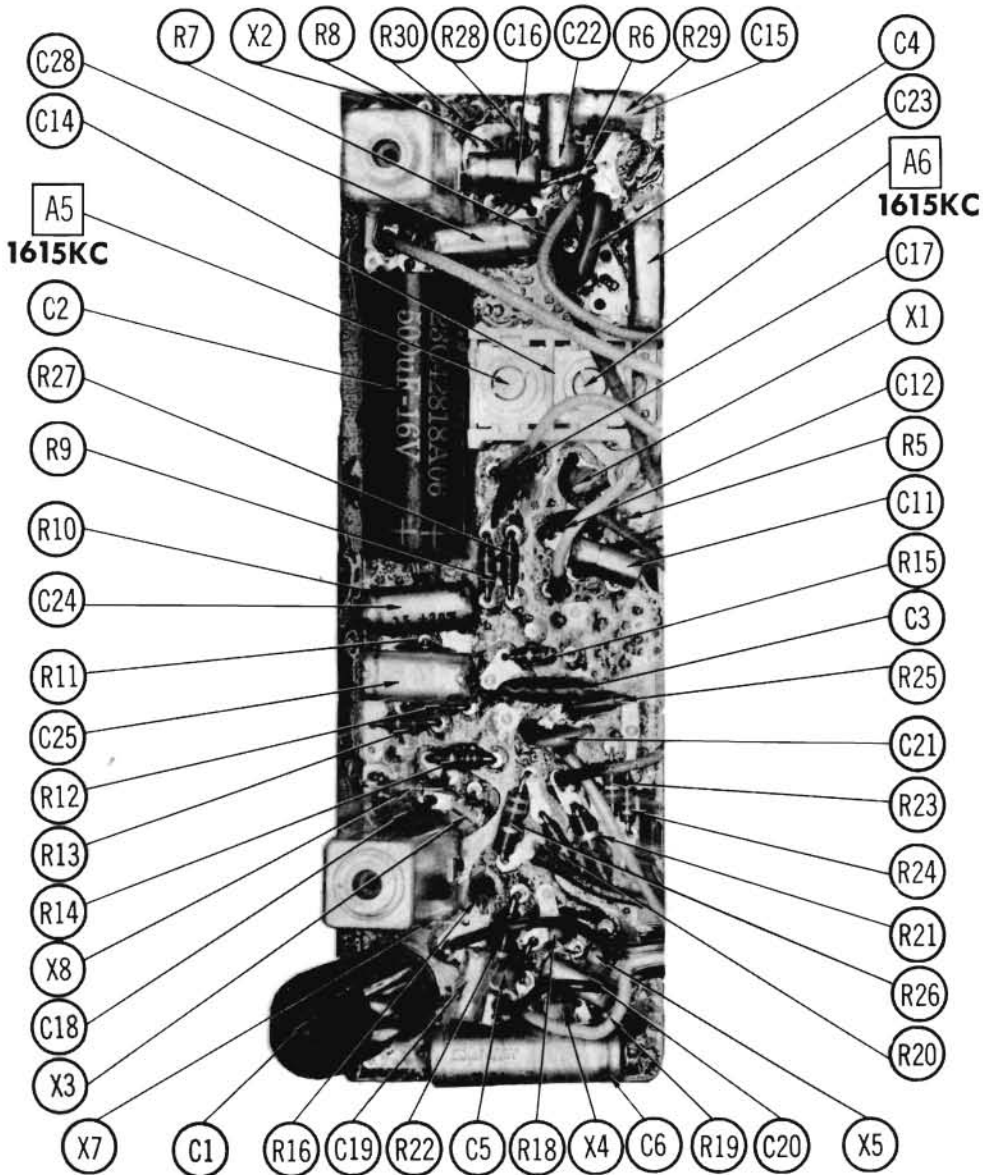


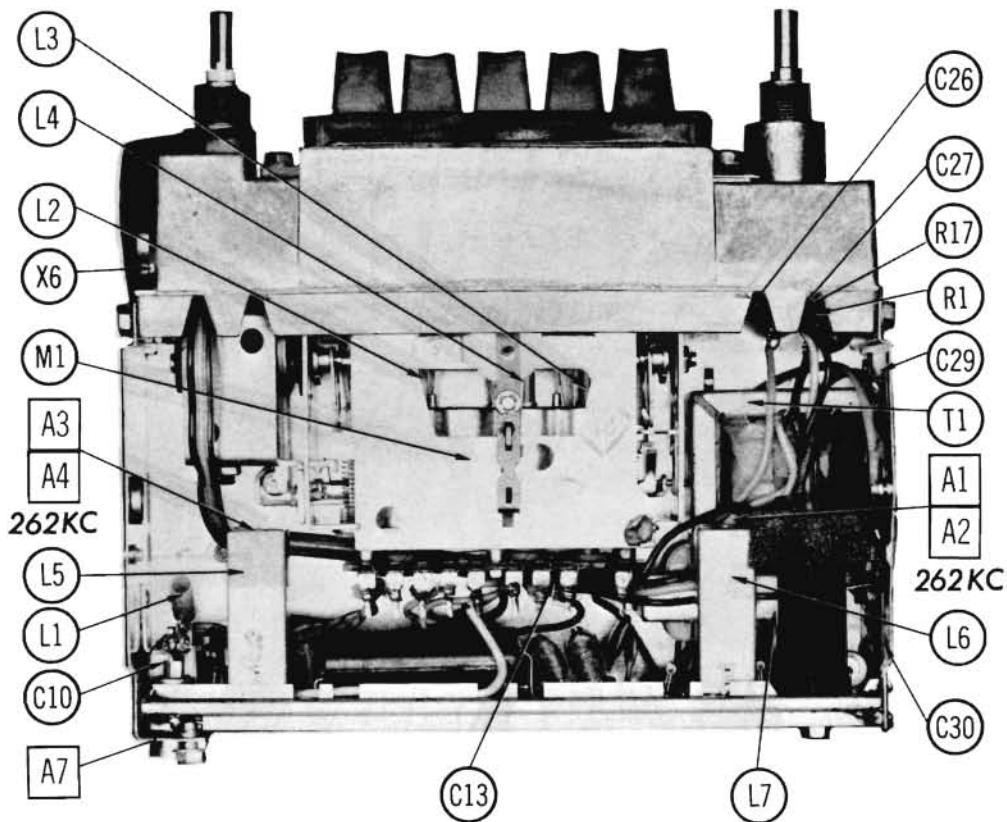
TRIUMPH MODEL 5SMTR (V350)



TRIUMPH MODEL 55MTR (V350)







## PARTS LIST AND DESCRIPTION

(When ordering parts, state Model, Part Number, and Description.)

Replacement parts shown may be superseded by the availability of newly introduced replacements. Have your local distributor check Sams COUNTER FACTS for the most up-to-date replacement.

### WIRING DATA

General-use Unshielded Hook-up Wire .....	Use BELDEN No. 8530 (Solid) Available in 12 Colors 8524 (Stranded) Available in 12 Colors
Shielded Hook-up Wire .....	Use BELDEN No. 8885
Rear Seat Speaker Extension Cable .....	Use BELDEN No. 8782 (Stranded) Coded Parallel Leads
Bonding Strap .....	Use BELDEN No. 8661 (3/8 in.) or 8670 (3/4 in.)

### TRANSISTORS

ITEM No.	ORIG. TYPE	USE	REPLACEMENT DATA			NOTES
			DELCO PART No.	GENERAL ELECTRIC PART No.	RCA PART No.	
X1	25B	RF Amp.	DS-46	GE-10		NPN
X2	25A	Conv.	DS-46	GE-10		NPN
X3	24B	1F Amp.	DS-46	GE-10		NPN
X4	M54	1st. AF Amp.	DS-46	GE-10		NPN
X5	M54	2nd. AF Amp.	DS-46	GE-10		NPN
X6	2N176	Output	DS-520	GE-3	SK-3009	PNP •

• When replacing, apply silicone grease to both sides of insulator. Tighten mounting screws securely.

### POWER RECTIFIERS & SIGNAL DIODES

ITEM No.	MEASURED CURRENT	ORIGINAL Part or Type No.	RECTIFIERS				DIODES
			GENERAL ELECTRIC PART No.	MALLORY PART No.	RCA PART No.	SARKES TARZIAN PART No.	GENERAL ELECTRIC PART No.
X7		1N139					1N34AS
X8		1N139					1N34AS

### ELECTROLYTIC CAPACITORS

ITEM No.	RATING		MOTOROLA PART No.	REPLACEMENT DATA				
	CAP.	VOLT.		AEROVOX PART No.	CORNELL-DUBILIER PART No.	GENERAL ELECTRIC PART No.	MALLORY PART No.	SPRAGUE PART No.
C1	500	16	23C42818A05	PRS1220	BR500-15	QT1-30	TC1505	TVA-1162
C2	500	16	23C42818A06	PRS1220	BR500-15	QT1-30	TC1505	TVA-1162
C3	10	25	23C41928A17 (23D65282A21) ①	CRE607A	NLW10-25	MT1-25	TT25X10	TE-1204
C4	10	25	23C41928A17 (23D65282A21) ①	CRE607A	NLW10-25	MT1-25	TT25X10	TE-1204
C5	.5	6	23C43280A04	CRE300A	NLW1-50	MT1-1	TT6X1	TE-1080
C6	100	16	23C41928A01	CRE623A	NLW100-25	MT1-25	TT25X100	TL-1162

① Use this Part Number when ordering from Motorola.

# PARTS LIST AND DESCRIPTION (CONTINUED)

(When ordering parts, state Model, Part Number, and Description.)

## CAPACITORS

ITEM No.	RATING	REMARKS	REPLACEMENT DATA						
			AEROVOX PART No.	CENTRALAB PART No.	CORNELL-DUBILIER PART No.	ELMENCO PART No.	MALLORY PART No.	SPRAGUE PART No.	
C10	125-350	#20B43088A02							
C11	.005 100V	#20C40481A10	DBE6D5	CPR-5000J	DPMS6D5	1DP-1-502	PVC625	6PS-D50	
C12	330		DI-330	DD-331	JBZ601YP331K	CCD-331	JF333	10TS-T33	
C13	180 N750						CN7318	10TCU-T18	
C14A	325-400								
C15	.01 100V								
C16	.005 100V								
C17	150 N470								
C18	330								
C19	.01 100V								
C20	.0015 100V								
C21	22 N150								
C22	.005 100V								
C23	.1 100V								
C24	.15 100V								
C25	.22 100V								
C26	.47								
C27	.47								
C28	.1 100V								
C29		#64A41668A06							
C30		#64K563410							

\* Not normally in distributor's stock. Available thru distributor on order to manufacturer.  
# Motorola Part Number.

## CONTROLS

All wattages 1/2 watt, or less, unless otherwise listed.

ITEM No.	USE	RESIST-ANCE	REPLACEMENT DATA				
			MOTOROLA PART No.	CENTRALAB PART No.	CLAROSTAT PART No.	CTS-IRC PART No.	MALLORY PART No.
RIA	Tone	20K	18D42832A05	F1-25K①, R16-10K, FFS104		† QJ-1832A	FA24L①, RU14T53, OS1250A, IS1812, US41
B	Volume/Switch	10K Tap @ 2200Ω		RFS113, KR-4			

① Use original spring mounting clips.

† "CONCENTRIKIT" Equivalent: K8①, Kit with Base Elements and Shafts: B11-119, P22-109 (Panel)  
B19-116X, R26-124 (Rear)  
76-1 (Switch)

## COILS (RF-IF)

ITEM No.	USE	REPLACEMENT DATA					
		MOTOROLA PART No.	MEISSNER PART No.	MERIT PART No.	MILLER PART No.	STANCOR PART No.	WORKMAN PART No.
L1	RF Choke (1.5uh)	24C40788A04	19-1001	BC-562	4806	RTC-8516	T856
L2	Antenna	①					
L3	RF	①					
L4	Oscillator	①					
L5	Input IF	24D42517A13					
L6	Output IF	24D42517A14					

① Part of Coils and Mounting Plate Assembly Part #1V43200A09.

## FILTER CHOKE

ITEM No.	RATINGS			REPLACEMENT DATA					NOTES
	CURRENT (Measured)	DC RES.	INDUCTANCE (0 CURRENT 1000--)	MOTOROLA PART No.	MERIT PART No.	STANCOR PART No.	THORDARSON PART No.	TRIAD PART No.	
L7	880ma	.5Ω	11MH	25D43221A01	C-4095	TC-2	TR-154	TY17XT	

## TRANSFORMER (AUDIO OUTPUT)

ITEM No.	IMPEDANCE		REPLACEMENT DATA					NOTES
	PRI.	SEC.	MOTOROLA PART No.	MERIT PART No.	STANCOR PART No.	THORDARSON PART No.	TRIAD PART No.	
	T1	12Ω	8Ω	25D43220A03				

## SPEAKER

ITEM No.	TYPE	RATING	REPLACEMENT DATA		NOTES
			MOTOROLA PART No.	QUAM PART No.	
SP1	5" x 7" PM	8Ω	50C43065A01	57A21Z8	

## FUSE DEVICES

ITEM No.	TYPE	RATING	REPLACEMENT DATA					
			PART No.		LITTELFUSE PART No.		BUSS PART No.	
			FUSE	HOLDER	FUSE	HOLDER	FUSE	HOLDER
F1	AGA	5 Amp.	65R122345	9C41095A20	301005	155004A	AGA 5	HAF

## MISCELLANEOUS

ITEM No.	PART NAME	MOTOROLA PART No.	NOTES
M1	Tuner	77D43175A01	AT-538 (Complete)

## CABINETS & CABINET PARTS

(When Ordering Specify Model, Chassis & Color)

ITEM	PART No.	ITEM	PART No.
Dial Scale	34C43181A01	Pushbutton	38B42343A03
Knob, Tuning or Volume	36B42400A02	Pointer, Dial	52B42600A02
Knob, Tone or Dummy	36B42396A01		

TRIUMPH MODEL 55MTR (V350)